



# ASOTIN COUNTY PUBLIC HEALTH

102 1<sup>st</sup> STREET | P.O. BOX 306. ASOTIN, WASHINGTON 99402  
PHONE: (509) 243.3344 | FAX (509) 243.3345 | [www.asotincountypublichealth.org](http://www.asotincountypublichealth.org)

April 5, 2021

Ron Weeks  
Garfield County Public Works  
P.O. Box 160  
Pomeroy WA, 99347

**RE: Long Plat Application, Bryan Canyon Estates**

**Onsite Sewage System (OSS) Comments:**

Dear Mr. Weeks:

Test hole evaluations for the proposed lots were completed by Asotin County Health District on 04/01/2021. Soils were typical of Type 4 and 5, loamy fine sands, sandy loams, silt loams, sandy clay loams, and silty clay loams with a minimum lot sizing of 20,000 square feet.

Minimum lot size requirements defined in Methods I of WAC 246-272A are met. Based on soil evaluation results, above named lots are suitable for Onsite Sewage Systems, providing no future development alters existing conditions.

Future development may require additional test holes when more details about the specific locations of on-site sewage are known. In general, the soil type does support on-site sewage.

ACHD recommends the sanitary approval of this Long Plat Application.

Sincerely,

Brady Woodbury  
Administrator  
Asotin County Health District  
509-243-3344

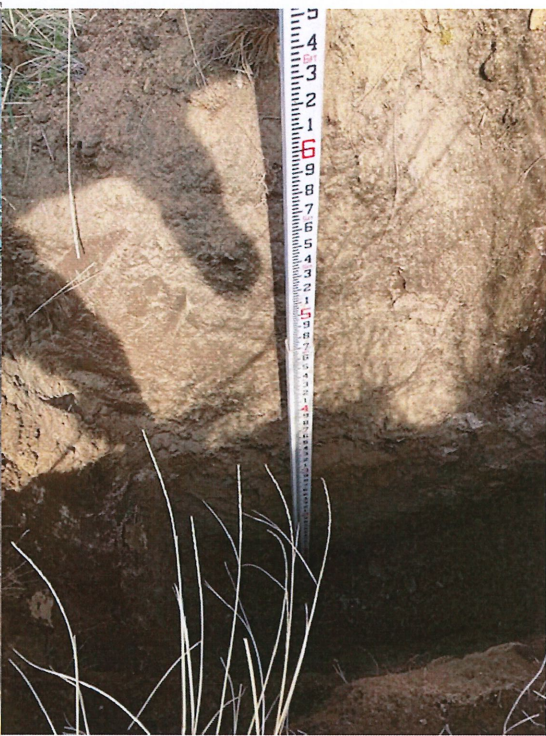
# Bryan Canyon Estates

Test Hole #1			Test Hole #2		
Depth	Description	Type	Depth	Description	Type
0 to 77	Loam w/ fine sands	4	0 to 12	Loam w/ fine sands	4
to	lighter color - deeper		12 to 84	Silty Clay	5
to	roots throughout		to	roots to 40"	
to			to		
Comments			Comments		

Test Hole #3			Test Hole #4		
Depth	Description	Type	Depth	Description	Type
0 to 55	Loamy fine sands	4	0 to 48	Fine sand loam	4
55 to 72	Silty clay w/ loam	5	48 to 7	Basalt (restrictive)	
to	roots throughout		to		
to			to		
Comments			Comments		

Test Hole #5			Test Hole #6		
Depth	Description	Type	Depth	Description	Type
0 to 80	Dark loam w/ sand	4	to		
to	roots throughout		to		
to			to		
to			to		
Comments			Comments		

Test Hole #7			Test Hole #8		
Depth	Description	Type	Depth	Description	Type
to			to		
to			to		
to			to		
Comments			Comments		

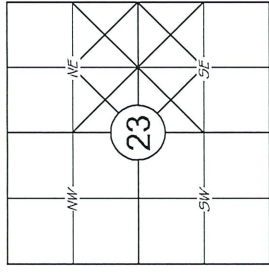


# T 14 N, R 42 E, S 23

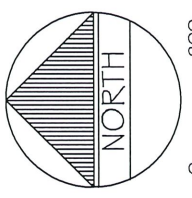
## BRYAN CANYON ESTATES

### SUBDIVISION PLAT

Part of the E 1/2 of Section 23  
 T 14N, R42E, Willamette Meridian  
 Garfield County, Washington



Section 23, T14N, R42E, W.M.



ORIGINAL SCALE : 1" = 200 FEET  
 CADD FILE : Bryan Canyon Estates Plat.dwg

#### LEGEND

- Set 5/8" X 30" long rebar w/ aluminum cap L5 55237
- Found Property Corner L5 21522
- ⊕ Calculated Position - Nothing Found or Set
- ⊕ Found Section or 1/4 Section Corner
- ③ Lot Number
- Subject Property Boundary Line
- Section Line
- County Road Centerline
- County Road Right of Way Line
- Road Easement
- - - - - Government Take Line

SUABOUGH, RICHARD  
 PRD AFN 2944

LOT	ADDRESS
1	140 ALMOTA FERRY RD
2	138 ALMOTA FERRY RD
3	132 ALMOTA FERRY RD
4	134 ALMOTA FERRY RD
5	136 ALMOTA FERRY RD
6	128 ALMOTA FERRY RD
7	124 ALMOTA FERRY RD
8	130 ALMOTA FERRY RD
9	126 ALMOTA FERRY RD
10	112 ALMOTA FERRY RD
11	114 ALMOTA FERRY RD
12	116 ALMOTA FERRY RD
13	118 ALMOTA FERRY RD
14	122 ALMOTA FERRY RD
15	120 ALMOTA FERRY RD

#### BASIS OF BEARINGS

The Basis of Bearings for this survey is the Washington Coordinate System, South Zone, NAD 83, as shown between the found southeast corner and the held northeast corner of Section 23, said bearing being S 00°36'51" W.

#### SURVEY REFERENCES

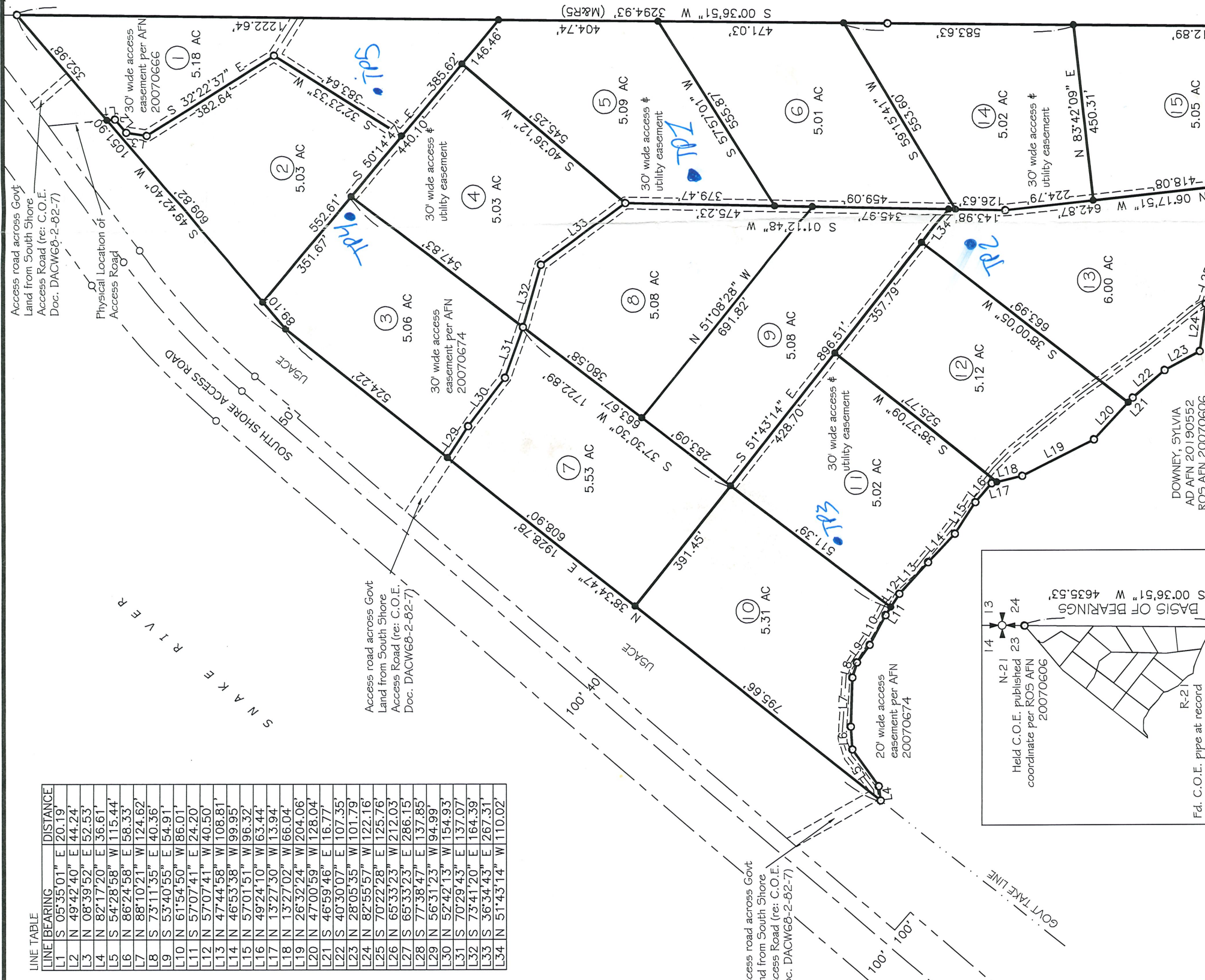
1. Warranty Deed AFN 20070674
2. Monumented Project Boundary USACOE LGG-O-0-1/14
3. Monumented Project Boundary USACOE LGG-O-0-1/15
4. USACOE Little Goose Lock & Dam Snake River Project WW-RE-298
5. Record of Survey Auditor's No. 20070606, L5 21522, Oct. 2007
6. USACOE Lower Granite Lock & Dam Road Relocation GDG-1-O-5/1
7. South Shore Access Road Plan & Profile File No. GDG-1-O-5/2
8. Administrator's Deed Auditor's No. 20190552
9. Personal Representative's Deed Auditor's No. 2944
10. Grant of Easement Auditor's File No. 20070666

#### SURVEY EQUIPMENT & METHODS

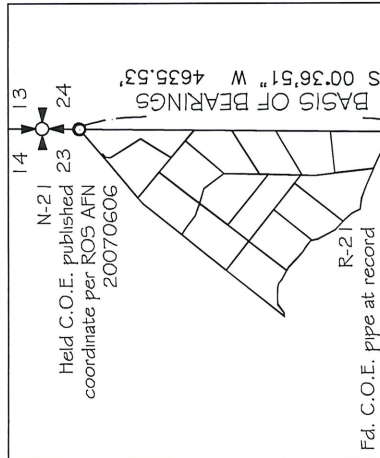
This survey was performed using a Leica G514 series RTK GPS for primary control and a Leica TC305 electronic total station using radial stakeout methods for monumentation establishment.



FILE FOR RECORD



LINE	BEARING	DISTANCE
L1	S 05°35'01" E	20.19'
L2	N 49°42'40" E	44.24'
L3	N 08°39'52" E	52.53'
L4	N 82°17'20" E	36.61'
L5	S 54°28'58" W	115.44'
L6	N 86°24'58" E	58.33'
L7	N 88°10'21" W	124.62'
L8	S 73°11'35" E	40.36'
L9	S 53°40'55" E	54.91'
L10	N 61°54'50" W	86.01'
L11	S 57°07'41" E	24.20'
L12	N 57°07'41" W	40.50'
L13	N 47°44'58" W	108.81'
L14	N 46°53'38" W	99.95'
L15	N 57°01'51" W	96.32'
L16	N 49°24'10" W	63.44'
L17	N 13°27'30" W	13.94'
L18	N 13°27'02" W	66.04'
L19	N 26°32'24" W	204.06'
L20	N 47°00'59" W	128.04'
L21	S 46°59'46" E	16.77'
L22	S 40°30'07" E	107.35'
L23	N 28°05'35" W	101.79'
L24	N 82°55'57" W	122.16'
L25	S 70°22'28" E	125.76'
L26	N 65°33'23" W	212.03'
L27	S 65°33'23" E	286.15'
L28	S 77°38'47" E	137.85'
L29	N 56°31'23" W	94.99'
L30	N 52°42'13" W	154.93'
L31	S 70°29'43" E	137.07'
L32	S 73°41'20" E	164.39'
L33	S 36°34'43" E	267.31'
L34	N 51°43'14" W	110.02'



Fd. C.O.E. pipe at record position per ROS AFN 20070606  
 R-21  
 DOWNNEY, SYLVIA  
 AD AFN 20190552  
 ROS AFN 20070606