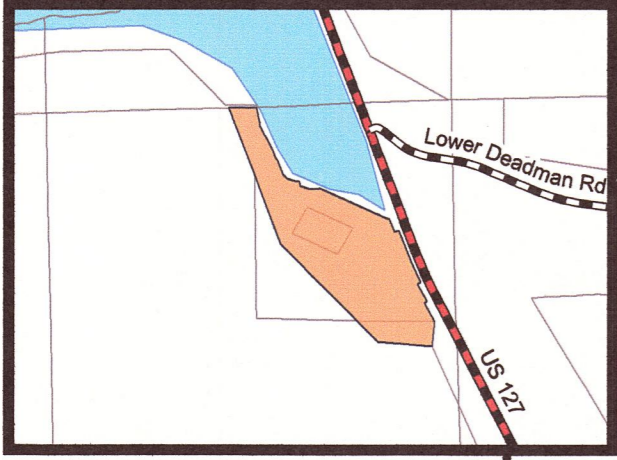
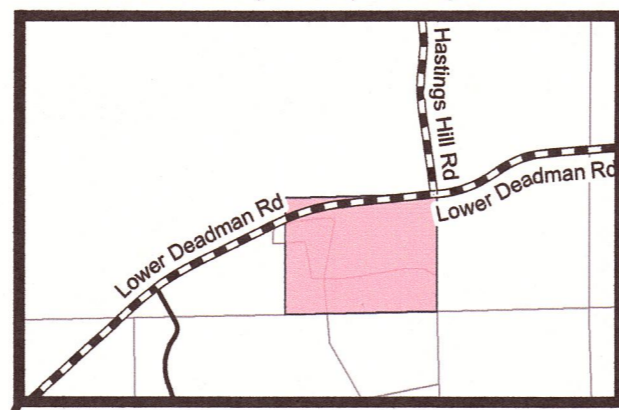




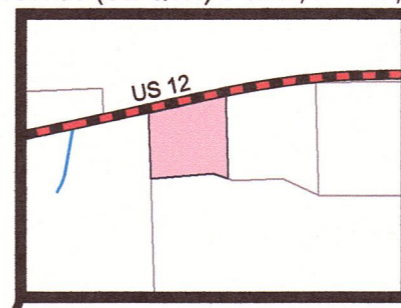
INDUSTRIAL ZONE - GARFIELD COUNTY PORT DISTRICT
SECTION 16, T 13 N, R 40 E, W.M.



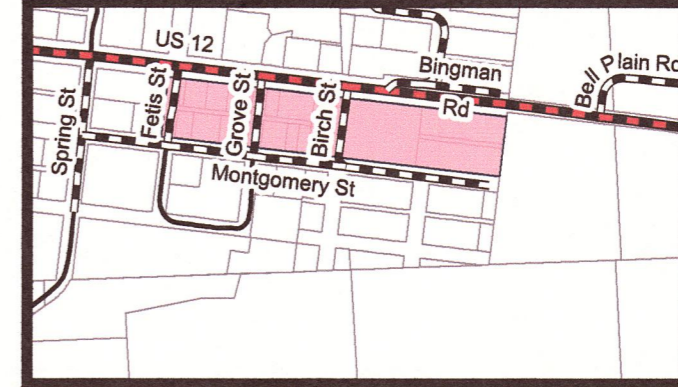
COMMERCIAL ZONE - DEADMAN STORE & CAFE
SECTION 11, T 13 N, R 40 E, W.M.



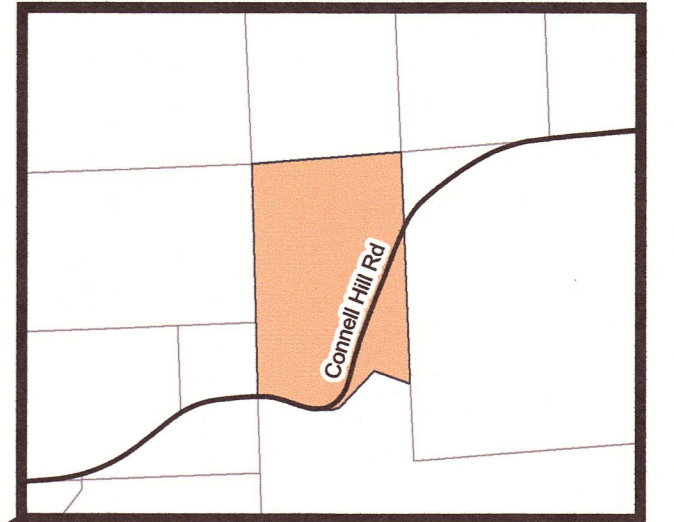
COMMERCIAL ZONE - SANDERS TRAILER COURT
SECTION 35 (SE QTR) T 12 N, R 41 E, W.M.



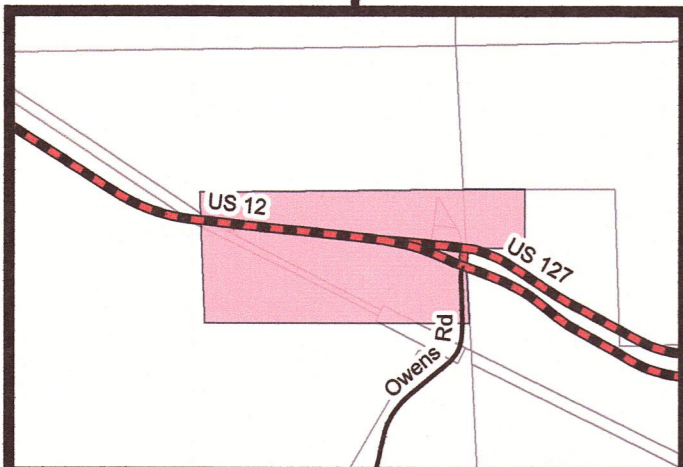
COMMERCIAL ZONE - PATAHA
SECTION 34, T 12 N, R 42 E, W.M.



INDUSTRIAL ZONE - DYE SEED RANCH
SECTION 20, T 12 N, R 43 E, W.M.



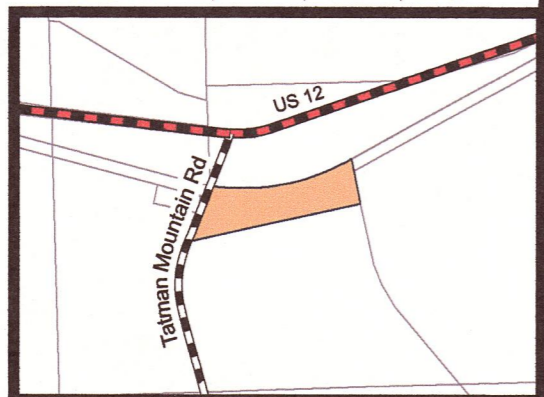
COMMERCIAL ZONE - DODGE
SECTION 16 & 17, T 12 N, R 40 E, W.M.



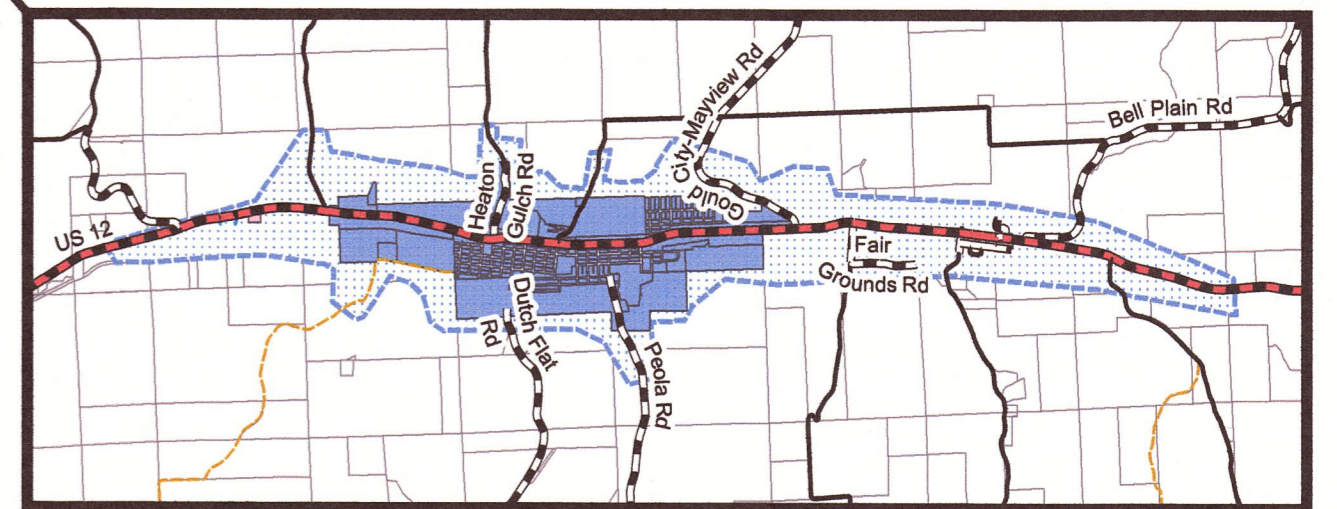
INDUSTRIAL ZONE - SCOTT SEED
SECTION 4, T 12 N, R 42 E, W.M.



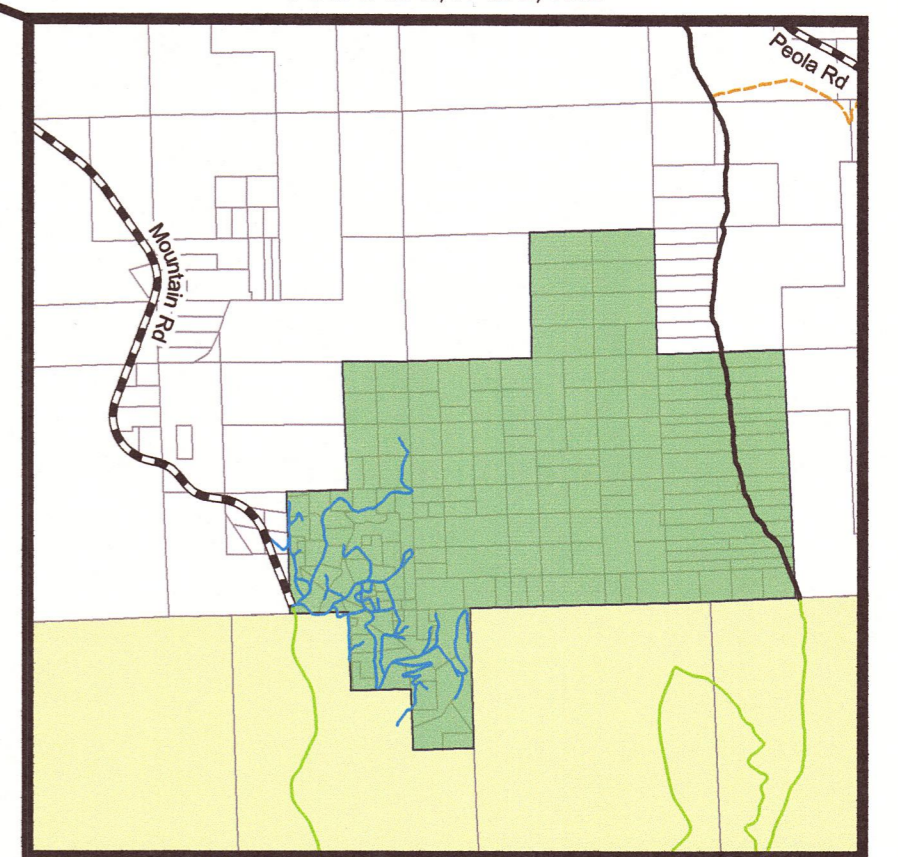
INDUSTRIAL ZONE - ZUMWALT
SECTION 4, T 11 N, R 41 E, W.M.



AGRICULTURAL TRANSITION ZONE - URBAN GROWTH AREA



MOUNTAIN CABIN ZONE - RECREATION AREA
T 9 N & 10 N, R 42 E, W.M.



Legend

Zones

- Industrial
- Mountain Cabin
- Commercial
- City of Pomeroy
- Agricultural Transition Zone / Urban Growth Area
- Umatilla National Forest

Roads

- State Highways
- Paved
- Gravel
- Dirt
- Private
- USFS

NOTE: ALL AREAS ARE ZONED AGRICULTURAL EXCEPT THOSE NOTED ON MAP.

This map was adopted by the Board of County Commissioners for Garfield County and signed into effect on the 28th day of July, 2008. This map is only being redrafted and no changes have been made to the zoning boundaries.

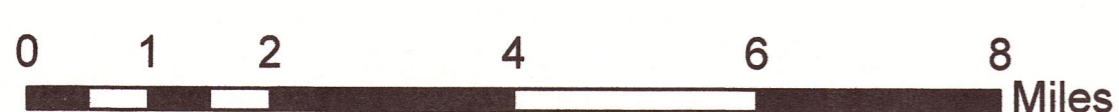
Quinn
Chair

W. Deal
Member

Robert Johnson
Member

Donna Deal
Clerk of the Board

Dated this 4th Day of
December 2017



OFFICIAL GARFIELD COUNTY
ZONING MAP

